



GAT MONTHLY MEMBERSHIP PROGRESS REPORT

Results as of: 2/28/2022

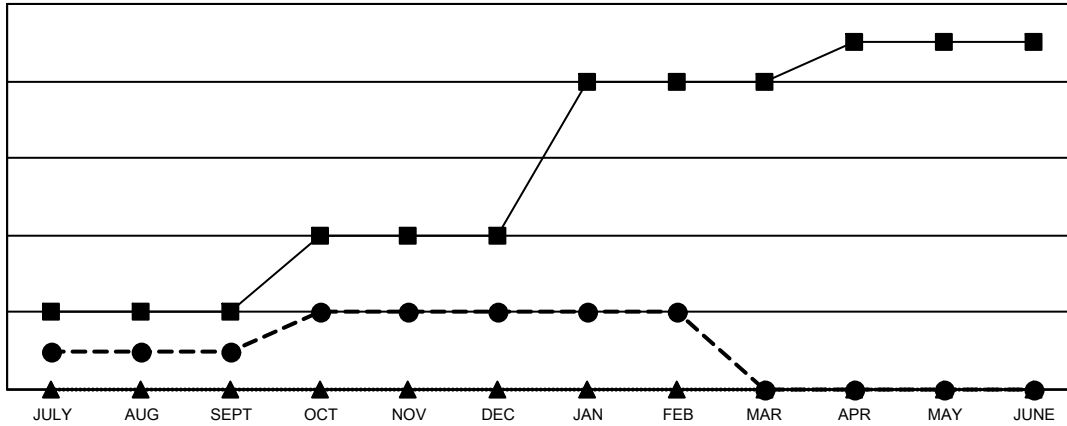
Multiple District 9

LOCATION: IOWA

Clubs			
RESULTS FOR 2021-2022			
QUARTER	NEW CLUB GOAL	NEW CLUBS	DROPPED CLUBS
JULY/AUG/SEPT	2	1	7
OCT/NOV/DEC	2	1	3
JAN/FEB/MAR	4	0	3
APR/MAY/JUNE	1	0	0

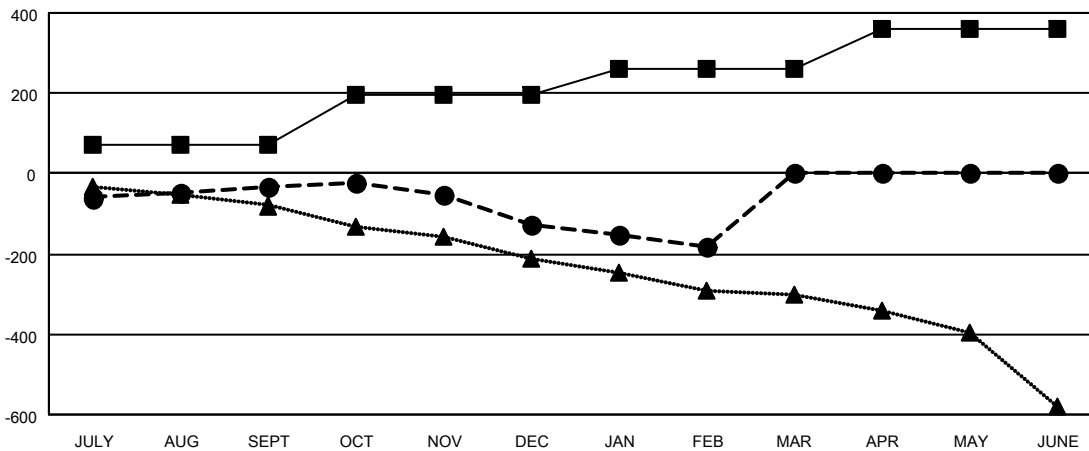
Members			
RESULTS FOR 2021-2022			
QUARTER	MEMBER GROWTH NET GOAL	MEMBER GROWTH ACTUAL	DROPPED MEMBERS ACTUAL (including transfers)
JULY/AUG/SEPT	70	185	205
OCT/NOV/DEC	125	161	227
JAN/FEB/MAR	65	85	134
APR/MAY/JUNE	100	0	0

GOALS AND ACTUAL NEW CLUBS CUMULATIVE



- CURRENT YEAR GOALS FOR NEW CLUBS
- CURRENT YEAR ACTUAL NEW CLUBS
- ▲- LAST YEAR ACTUAL NEW CLUBS

GOALS AND ACTUAL MEMBERS CUMULATIVE



- MEMBER GROWTH NET GOAL
- MEMBER GROWTH ACTUAL
- ▲- LAST YEAR MEMBERSHIP ACTUAL

DROPPED CLUBS: 13	144 CLUBS OF 303 ADDED 1 OR MORE NEW MEMBERS	GENDER DISTRIBUTION
DROPPED MEMBERS	CLICK HERE FOR CUMULATIVE MEMBERSHIP DATA	MALE 5,052 (72.42%)
DECEASED 94		FEMALE 1,923 (27.57%)
CLUB CANCELLED 39		NON BINARY 1 (0.01%)
OTHER 433		PREFER NOT TO ANSWER 0 (0.00%)
TOTAL 566		TOTAL FAMILY UNIT MEMBERS 1,470
		FAMILY MEMBERS PAYING HALF DUES 748